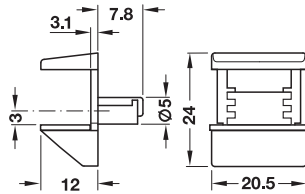




→ Zinc alloy, with rapid-action clamping and clamp



Note

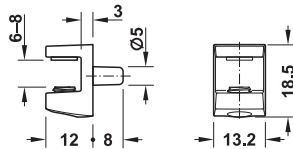
Identical model for screw fixing: Cat. No. 282.13.600

- > Version: With plastic support
- > Shelf security feature: The lifting safeguard/clamp prevents unintentional tilting, lifting and removal of glass shelves
- > For glass thickness: 4, 6 and 8 mm
- > Material: Zinc alloy, support: Plastic
- > Colour: Support: Grey
- > Installation: For plug fitting into drill hole Ø 5 mm, tightening by a 180° turn of the speed mount element
- > Tightening with screw prevents surface damages to the drill hole

Finish	Cat. No.
Nickel plated	282.13.610

Packing: 20 or 500 pieces

→ Zinc alloy, with safety lock screw and plastic support



- > Version: With plastic support at top and bottom
- > Shelf security feature: With safety lock screw
- > For glass thickness: 6-8 mm
- > Material: Zinc alloy, safety lock screw: Plastic
- > Colour: Safety lock screw and support: Transparent
- > Installation: For plug fitting into drill hole Ø 5 mm

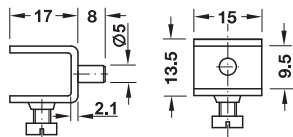
Finish	Cat. No.
Nickel plated	282.12.485

Packing: 100 or 1000 pieces

→ Steel, with safety lock screw



For glass thickness 8/9 mm



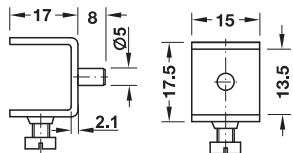
- > Shelf security feature: With safety lock screw
- > Material: Steel, safety lock screw: Plastic
- > Colour: Safety lock screw: Black
- > Installation: For plug fitting into drill hole Ø 5 mm

Finish	Cat. No.
Nickel plated	282.20.715

For glass thickness 8/9 mm



For glass thickness 12/13 mm



Finish	Cat. No.
Nickel plated	282.20.724

For glass thickness 12/13 mm

Packing: 20 or 100 pieces