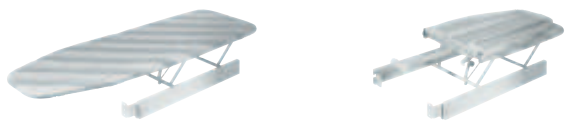
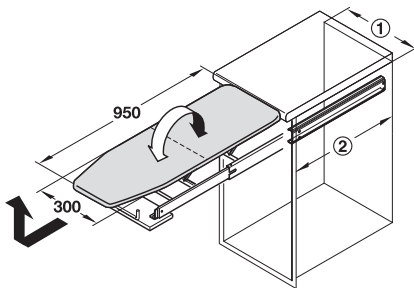


→ For installation behind drawer front panel



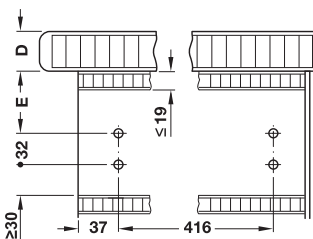
- > Material: Fitting parts: Steel
- > Finish/colour: Fitting parts: Powder coated, white, RAL 9016
- > Version: Folding, ironing board supports automatically extend when the drawer is opened, continuous width adjustment

Installation in drawer



- ① Internal width 362–500 mm
- ② Internal cabinet depth >500 mm

Please observe following dimensions in order to mount ironing board flush with worktop:



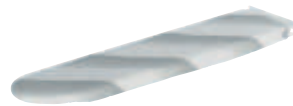
Dim. D mm	20	30	40	50
Dim. E mm	86	76	66	66

Cover	Cat. No.
Aluminium	568.60.723
Grey stripes	568.60.710

Packing: 1 piece

Sleeve ironing board for ironing board installed behind drawer front panel

Vitaflex



- > Material: Steel
- > Finish/colour: Powder coated, white, RAL 9016
- > Installation: For hooking into bracket on ironing board, drawer front model

Cover	Sleeve ironing board	Replacement ironing board cover
Grey stripes	568.61.700	568.60.916

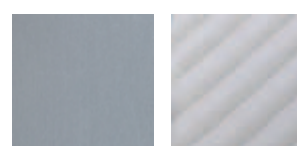
Packing: 1 piece

→ Replacement ironing board cover with elasticated fit



Cover	Dim. mm	Cat. No.
Aluminium	1005 x 350 x 2	568.60.923
Grey stripes		568.60.907

Packing: 1 piece



Aluminium Grey stripes

DGH-M-INT 2020, HDE-en, 05/19; Dimensional data not binding. We reserve the right to alter specifications without notice.



6

Kitchen Cabinet Fittings