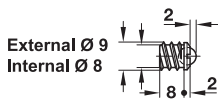
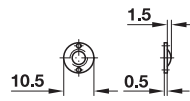


**Ball catch**

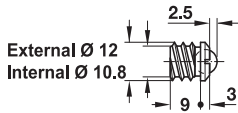
→ For screwing in



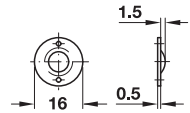
Catch



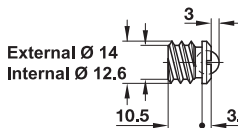
Striking plate



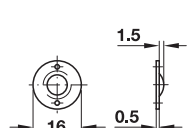
Catch



Striking plate



Catch



Striking plate

- > Material: Catch: Brass, striking plate: Steel, ball: Chrome steel
- > Finish: Catch: Bright, striking plate: Brass plated
- > Installation: Catch for screwing in, striking plate for pin fixing

Internal Ø mm	External Ø mm	Cat. No.
8.0	9.0	241.86.105
10.8	12.0	241.86.114
12.6	14.0	241.86.123

Packing: 1 oder 20 pieces

**Order reference**

Metal pins not supplied, please order separately.

**Round head metal pins**

- > Material: Steel

→ **Nickel plated**

Pin Ø mm	Length L mm	Contents	Cat. No.
0.9	11	6900 pcs.	076.40.217
1.6	15	2000 pcs.	076.40.299

Packing: 1 pack

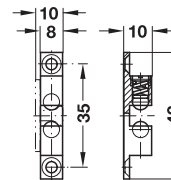
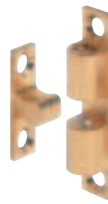
→ **Brass plated**

Pin Ø mm	Length L mm	Contents	Cat. No.
1.6	15	2000 pcs.	076.40.191

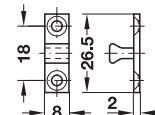
Packing: 1 pack

**Twin ball catch**

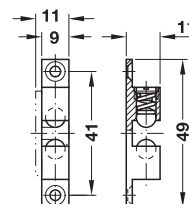
→ For screw fixing



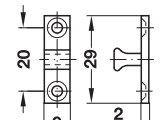
Catch



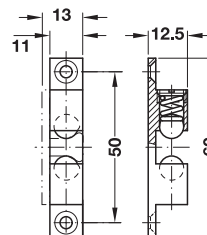
Counterpiece



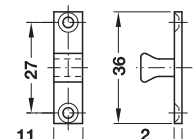
Catch



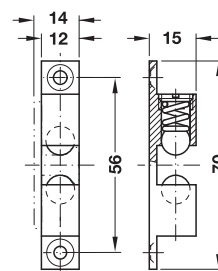
Counterpiece



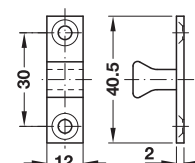
Catch



Counterpiece



Catch



Counterpiece

- > Material: Balls: Stainless steel, catch and counterpiece: Brass
- > Installation: For screw fixing
- > Adjustment facility: Retaining pressure with flat blade screwdriver

Catch height mm	Brass bright	Brass polished chrome plated	Brass matt nickel plated
43	244.20.014	244.20.214	244.20.614
49	244.20.015	244.20.215	244.20.615
60	244.20.016	244.20.216	244.20.616
70	244.20.017	244.20.217	244.20.617

Packing: 1 or 50 pieces



6

